

Paper Reference(s) 1SC0/2PF  
Pearson Edexcel Level 1/Level 2 GCSE (9–1)

Combined Science  
PAPER 6  
Foundation Tier

Friday 16 June 2023 – Morning

Diagram Booklet

In the boxes below, write your name, centre number and candidate number.

Surname					
Other names					
Centre Number					
Candidate Number					

## INSTRUCTIONS

There may be spare copies of some diagrams in case you need them.

**THIS DIAGRAM BOOKLET *MUST* BE RETURNED WITH THE  
QUESTION PAPER AT THE END OF THE EXAMINATION.**

## **Contents**

### **Page**

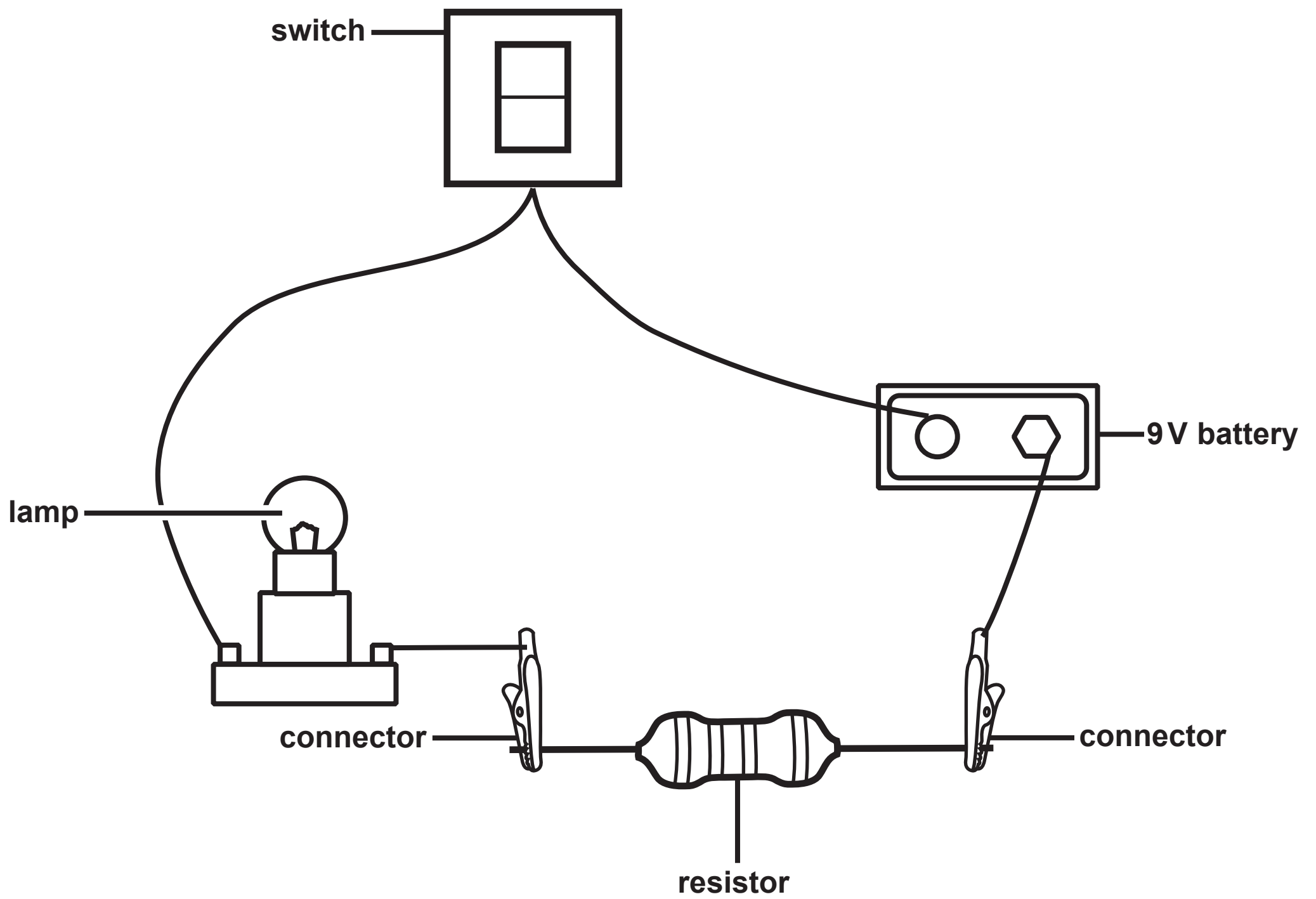
<b>4–5</b>	<b>Question 1(a)</b>
<b>6</b>	<b>Question 1(b)</b>
<b>7</b>	<b>Question 2(a)</b>
<b>8</b>	<b>Question 2(b)</b>
<b>9</b>	<b>Question 2(b)(ii)</b>
<b>10</b>	<b>Question 3</b>
<b>11</b>	<b>Question 3(c)</b>
<b>12</b>	<b>Question 4</b>
<b>13</b>	<b>Question 4(d)</b>
<b>14</b>	<b>Question 4(d)(ii)</b>
<b>15</b>	<b>Question 5(b)</b>
<b>16</b>	<b>Question 5(c)(ii)</b>
<b>17</b>	<b>Question 6(d)</b>

### **Spare Copies**

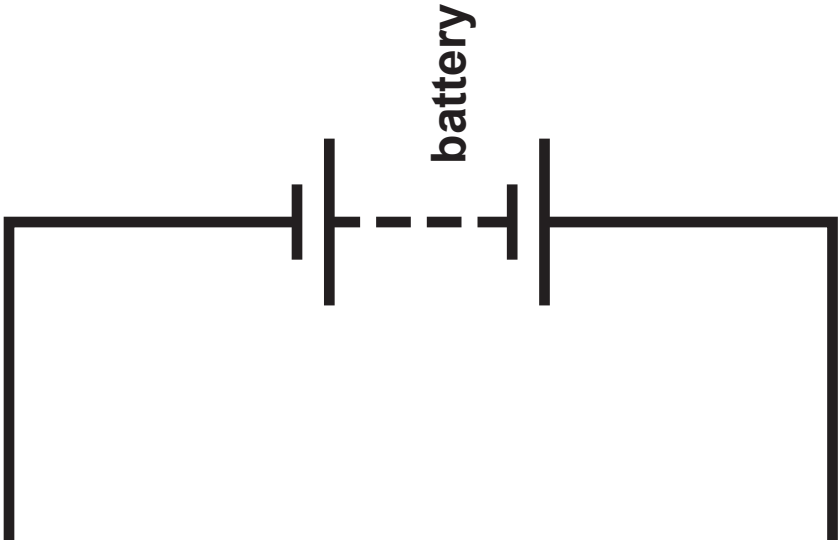
<b>18</b>	<b>Question 1(a)...continued.</b>
<b>19</b>	<b>Question 2(a)</b>
<b>20</b>	<b>Question 4(d)</b>
<b>21</b>	<b>Question 5(b)</b>
<b>22</b>	<b>Question 5(c)(ii)</b>

## Question 1(a)

FIGURE 1

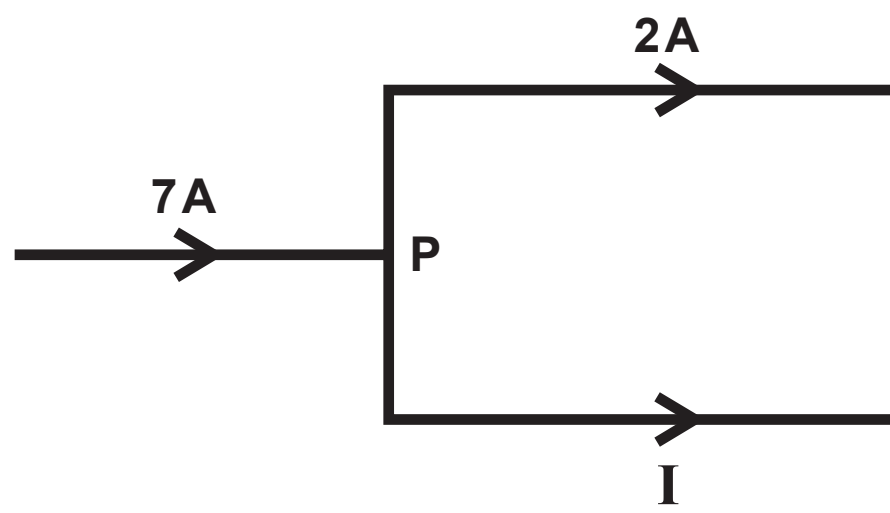


(continued on the next page)



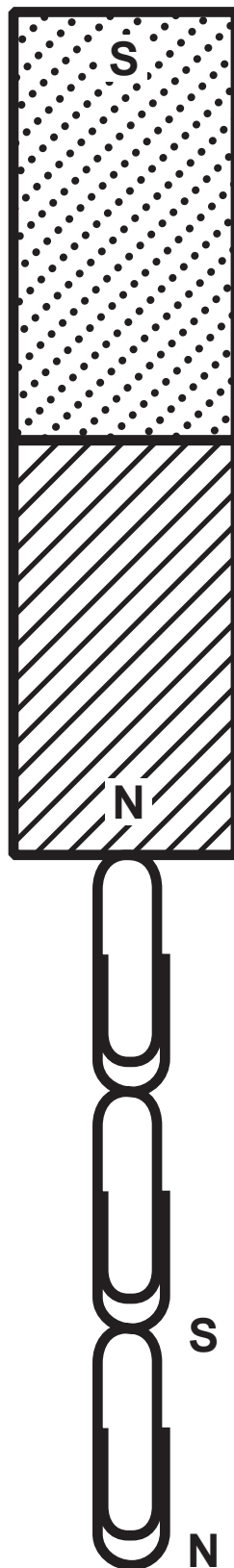
## Question 1(b)

FIGURE 2



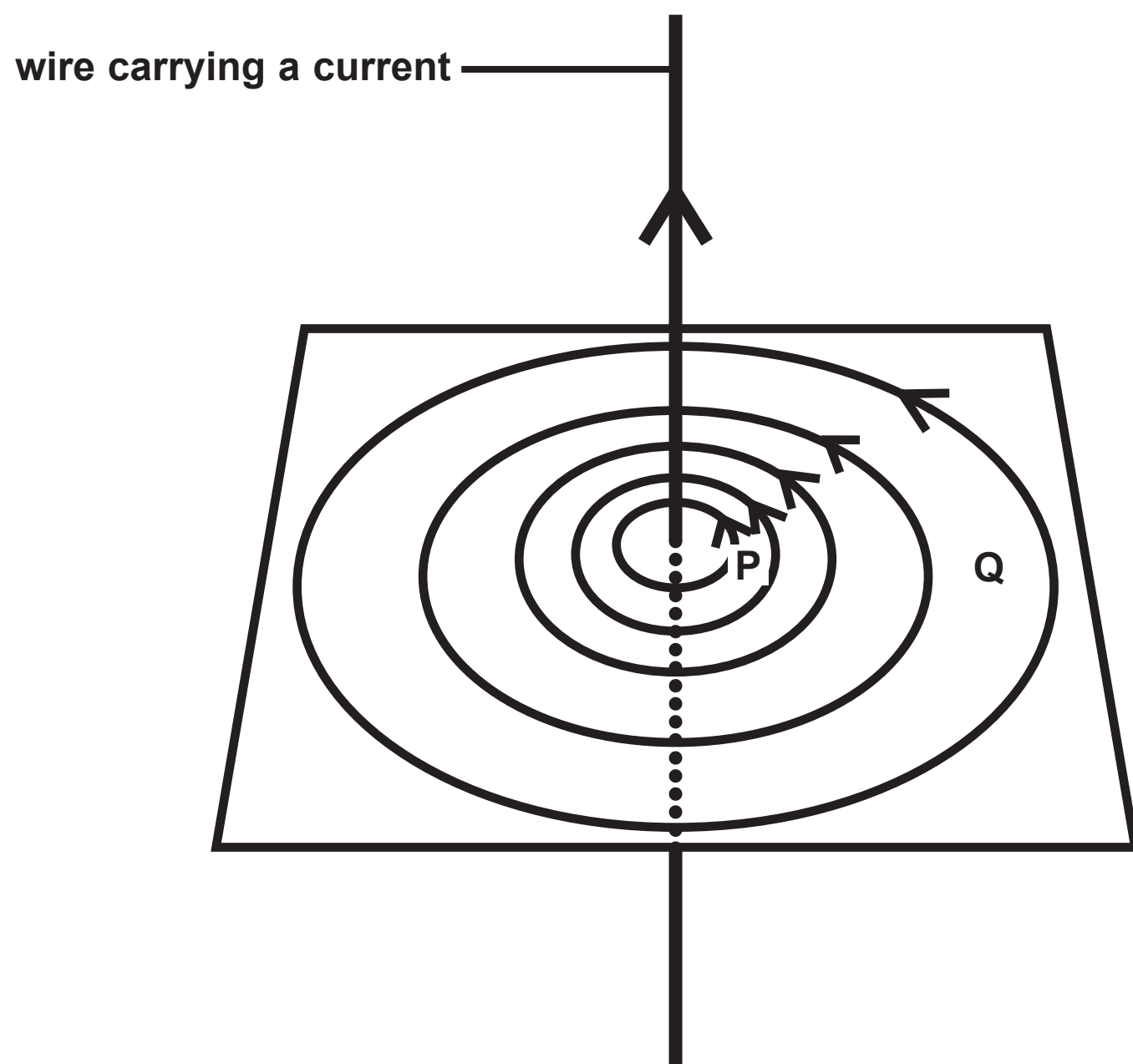
## Question 2(a)

FIGURE 3



## Question 2(b)

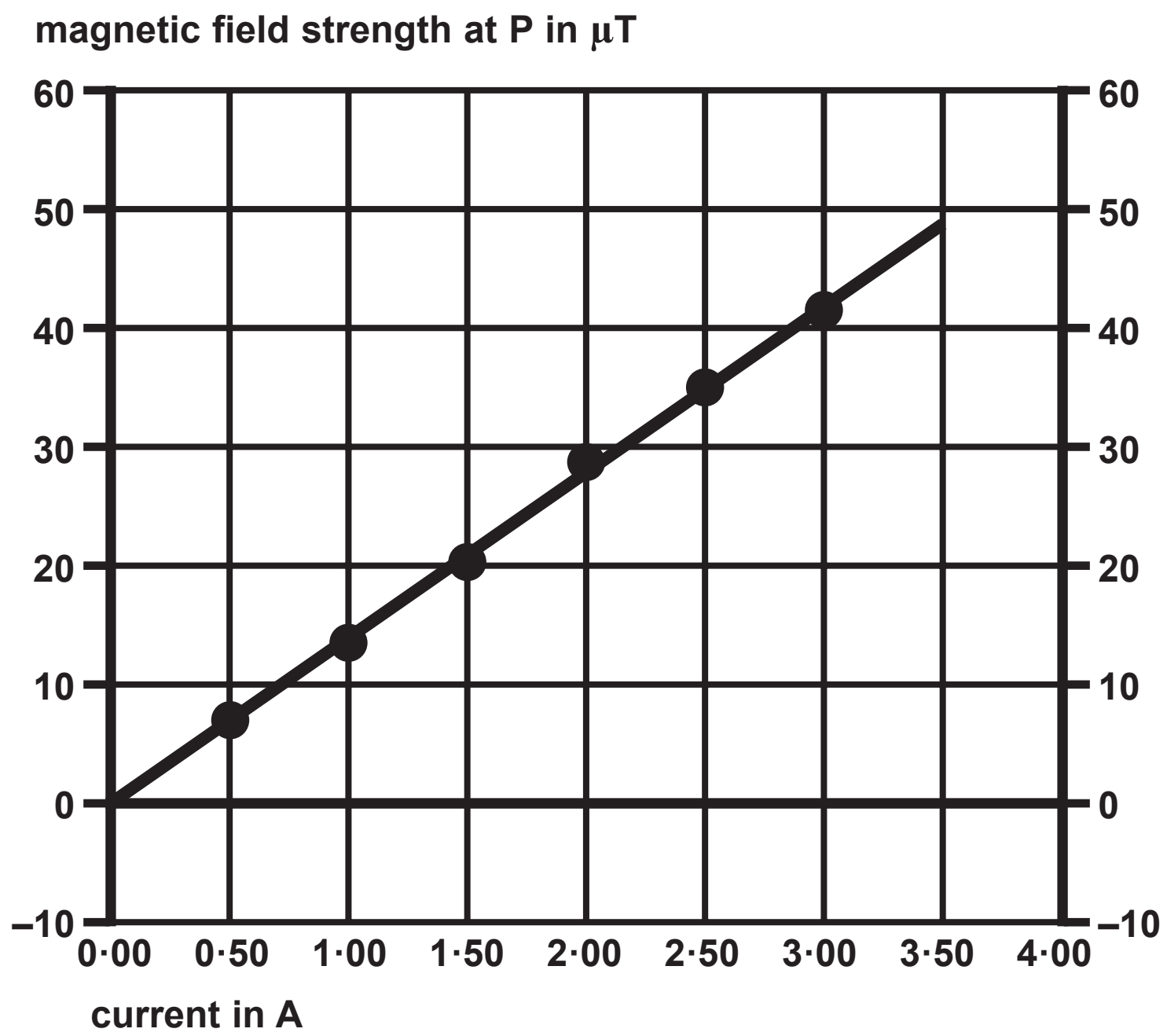
FIGURE 4





## Question 2(b)(ii)

FIGURE 5



## Question 3

FIGURE 6

Not to scale

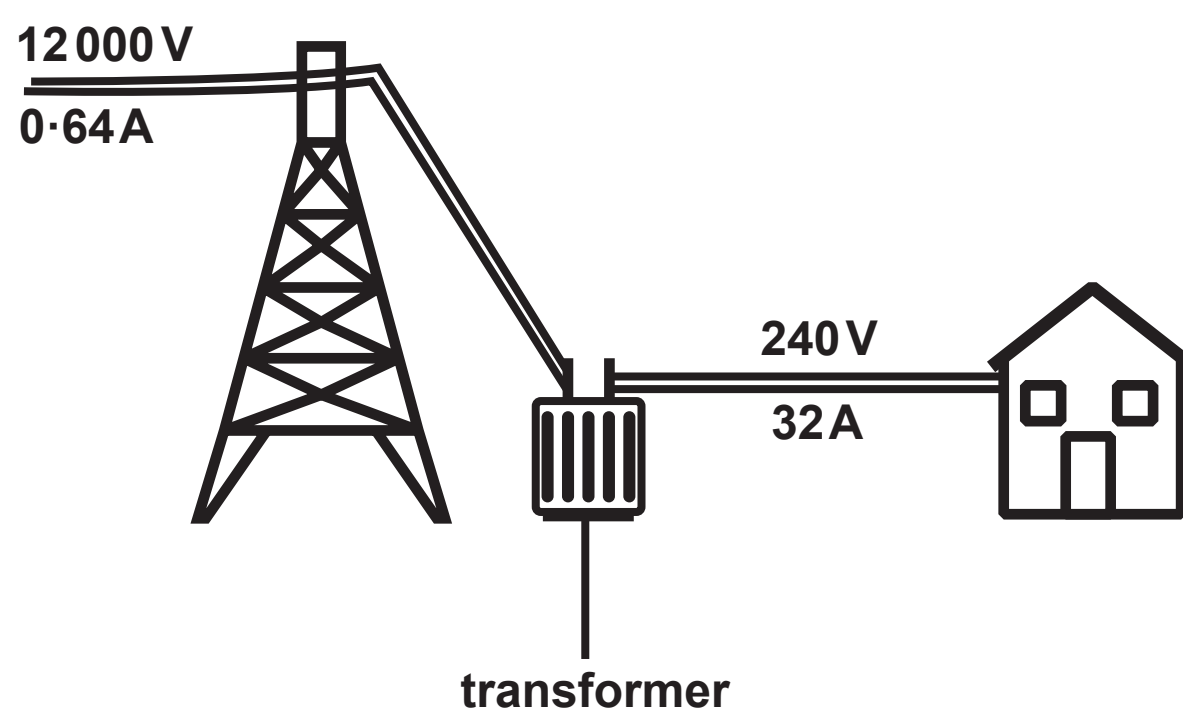
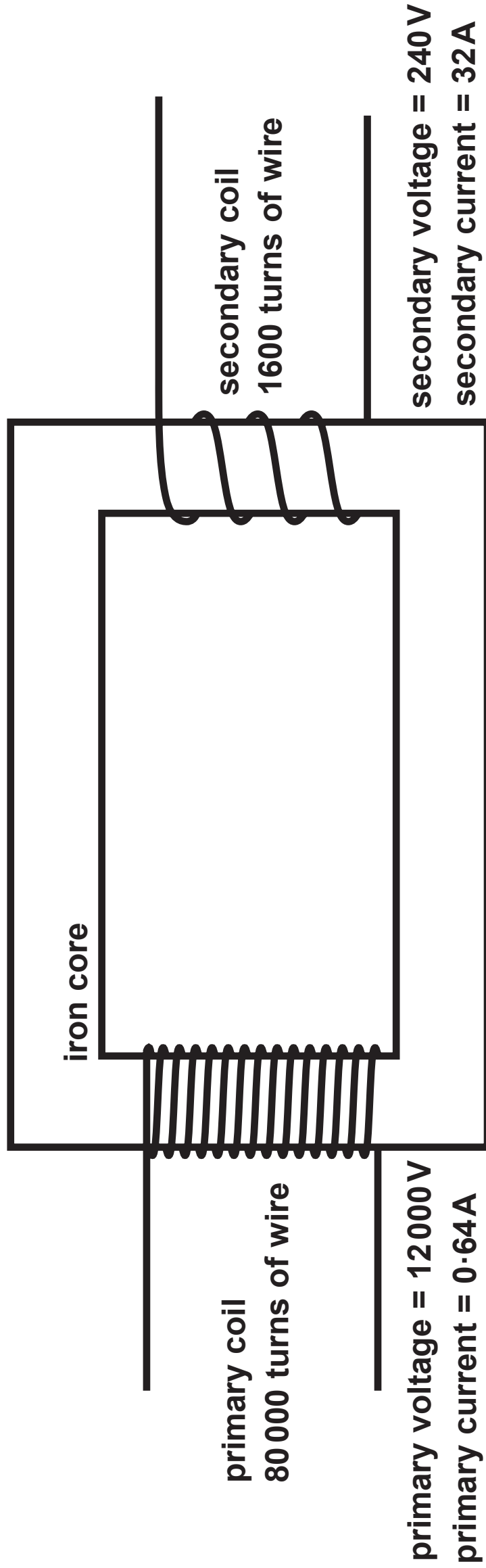
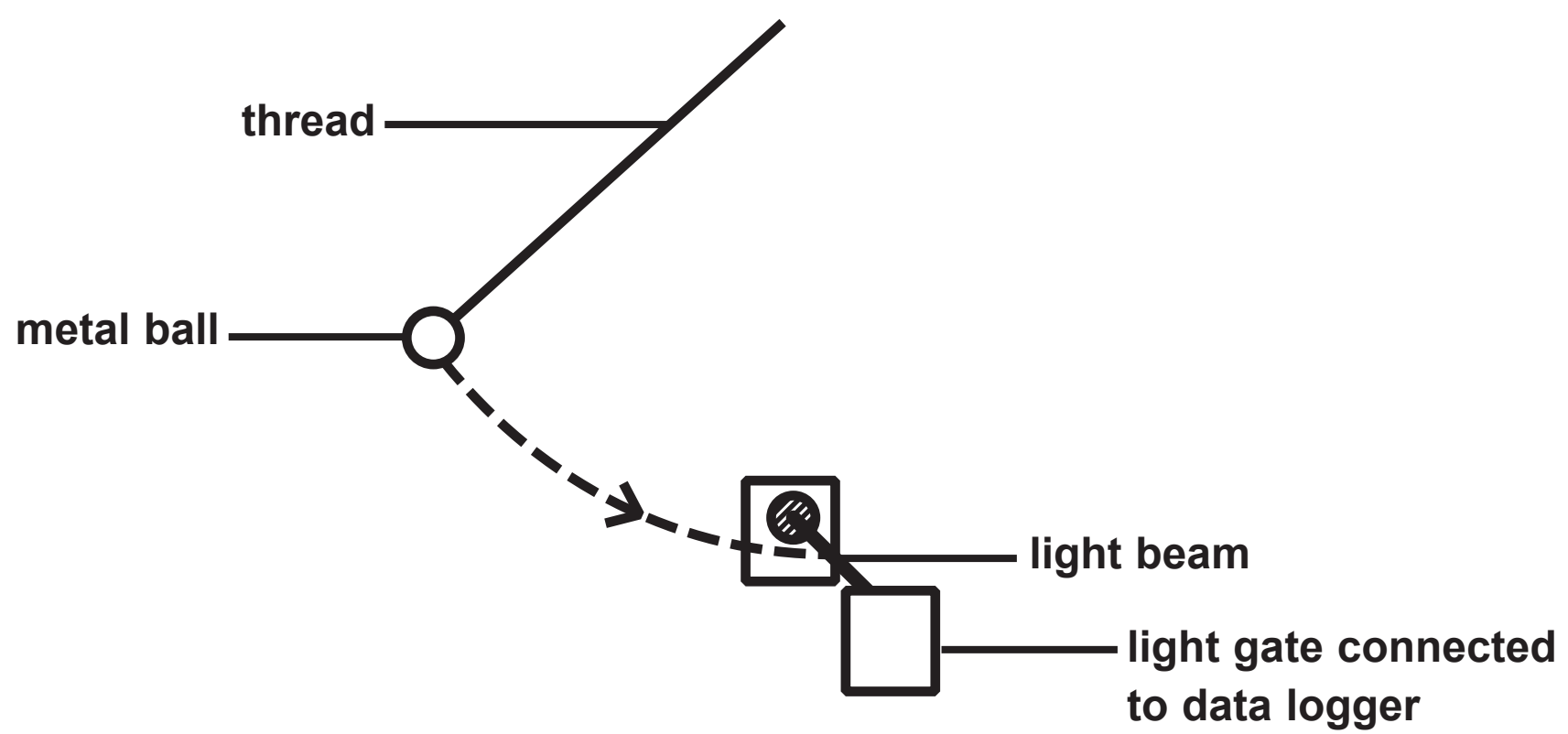


FIGURE 7



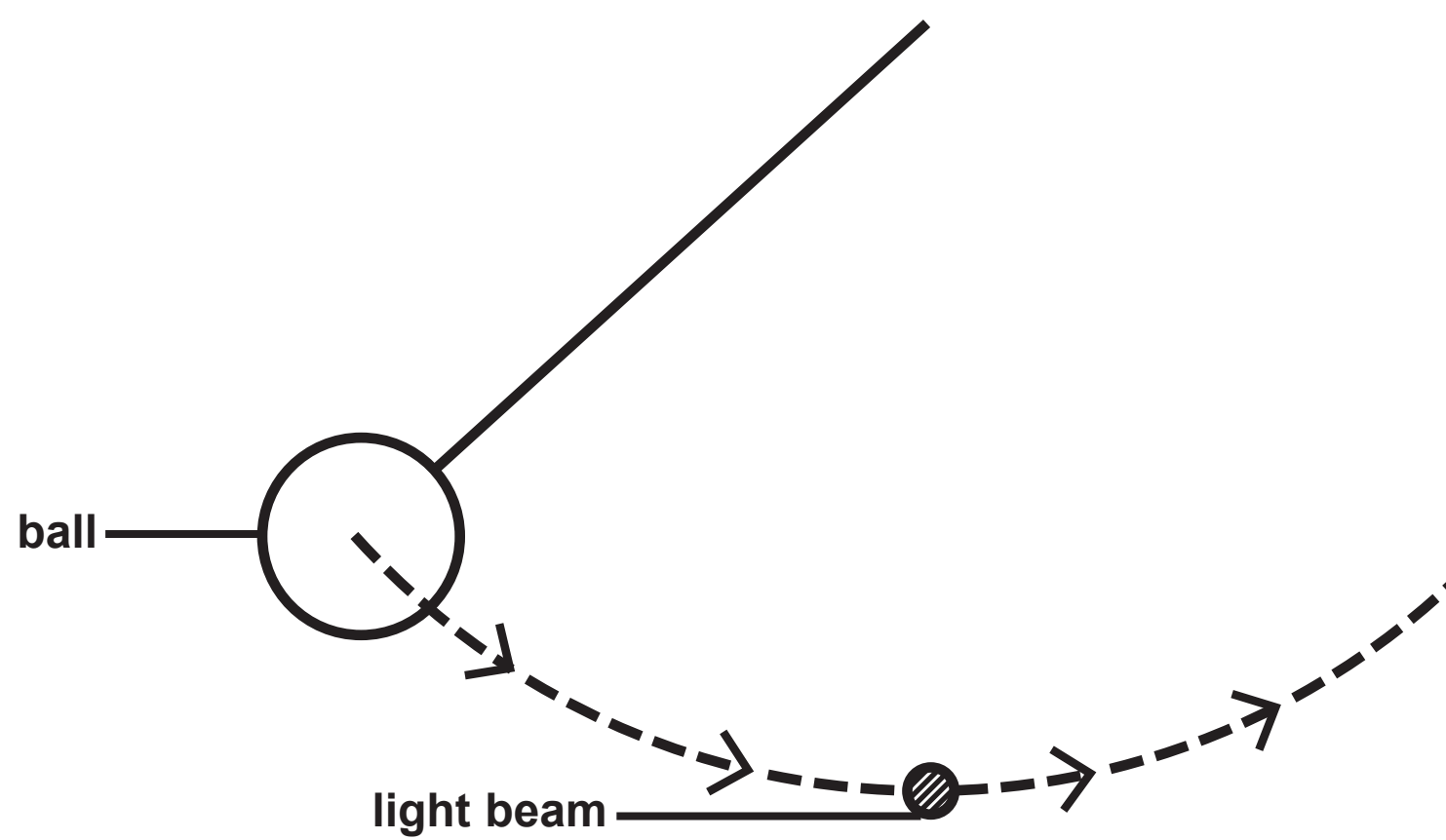
## Question 4

FIGURE 8



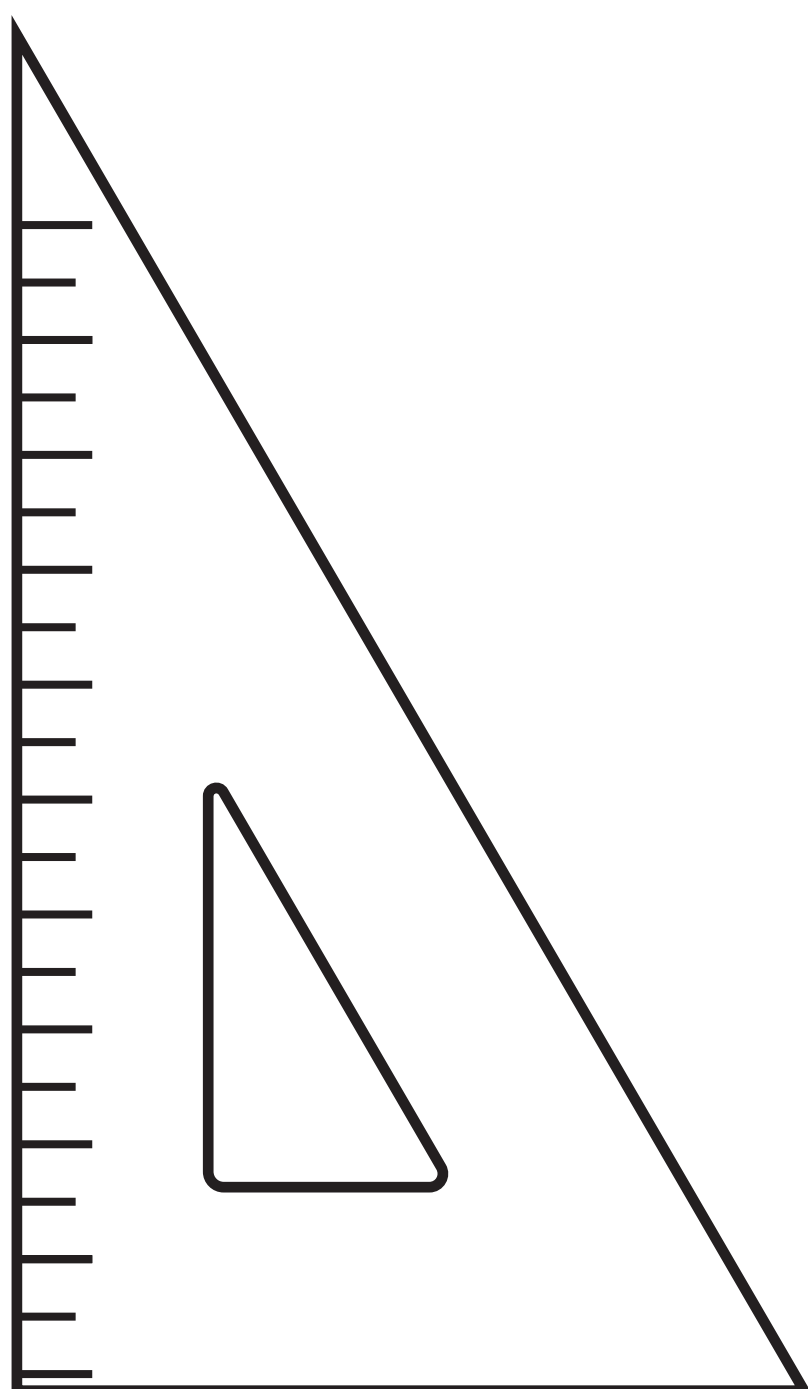
## Question 4(d)

FIGURE 10



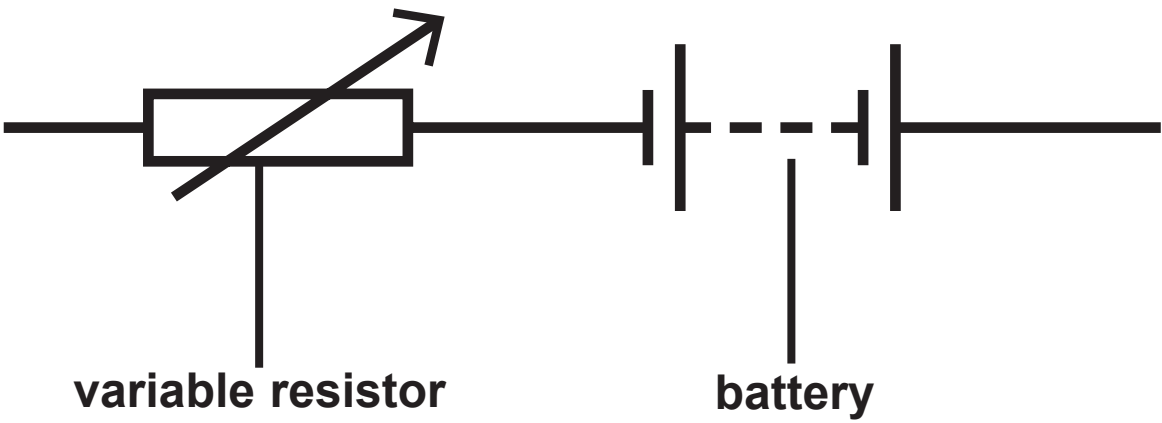
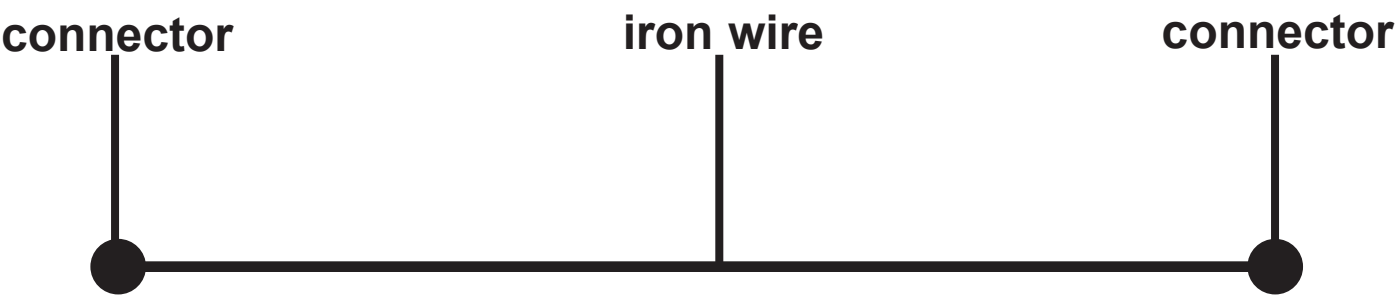
## Question 4(d)(ii)

FIGURE 11



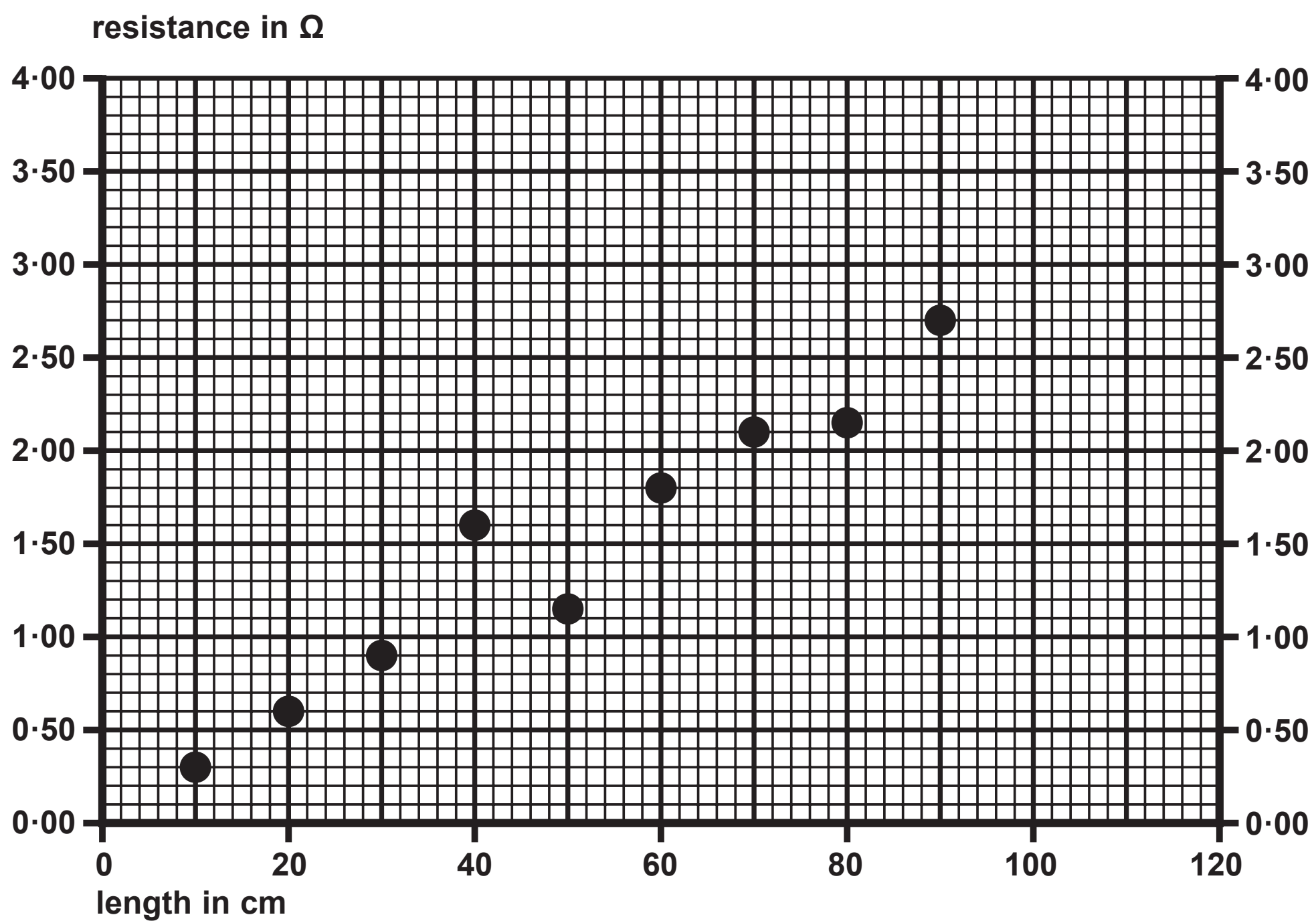
Question 5(b)

FIGURE 12



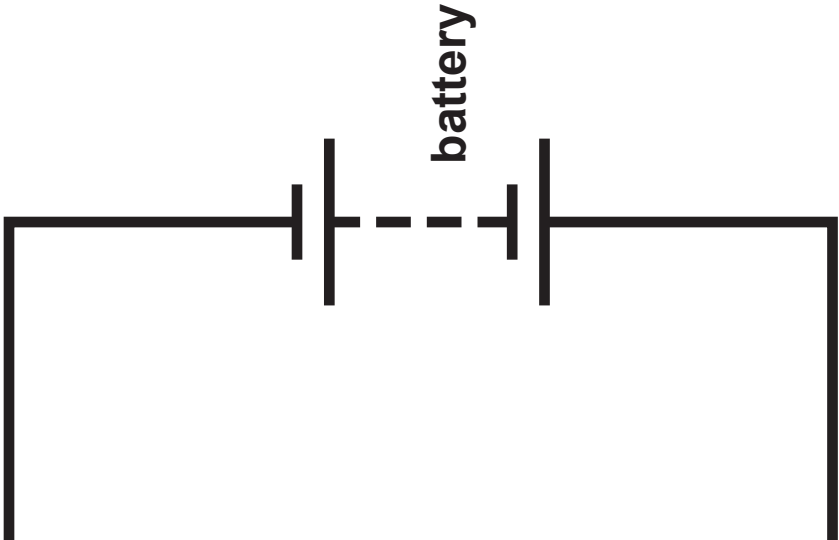
## Question 5(c)(ii)

FIGURE 13



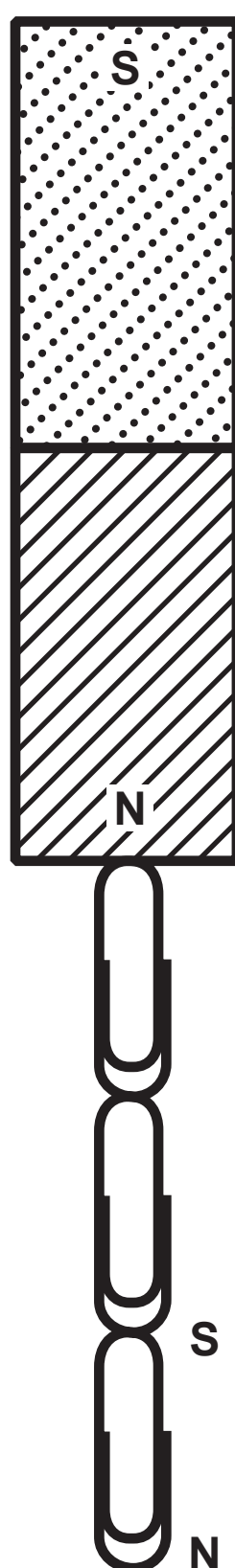


material	R-value	fire resistance
fibreglass, made from sand	R-3·3	non-flammable
polystyrene, made from petroleum oil	R-4·0	melts at 270 °C and spreads fire very quickly



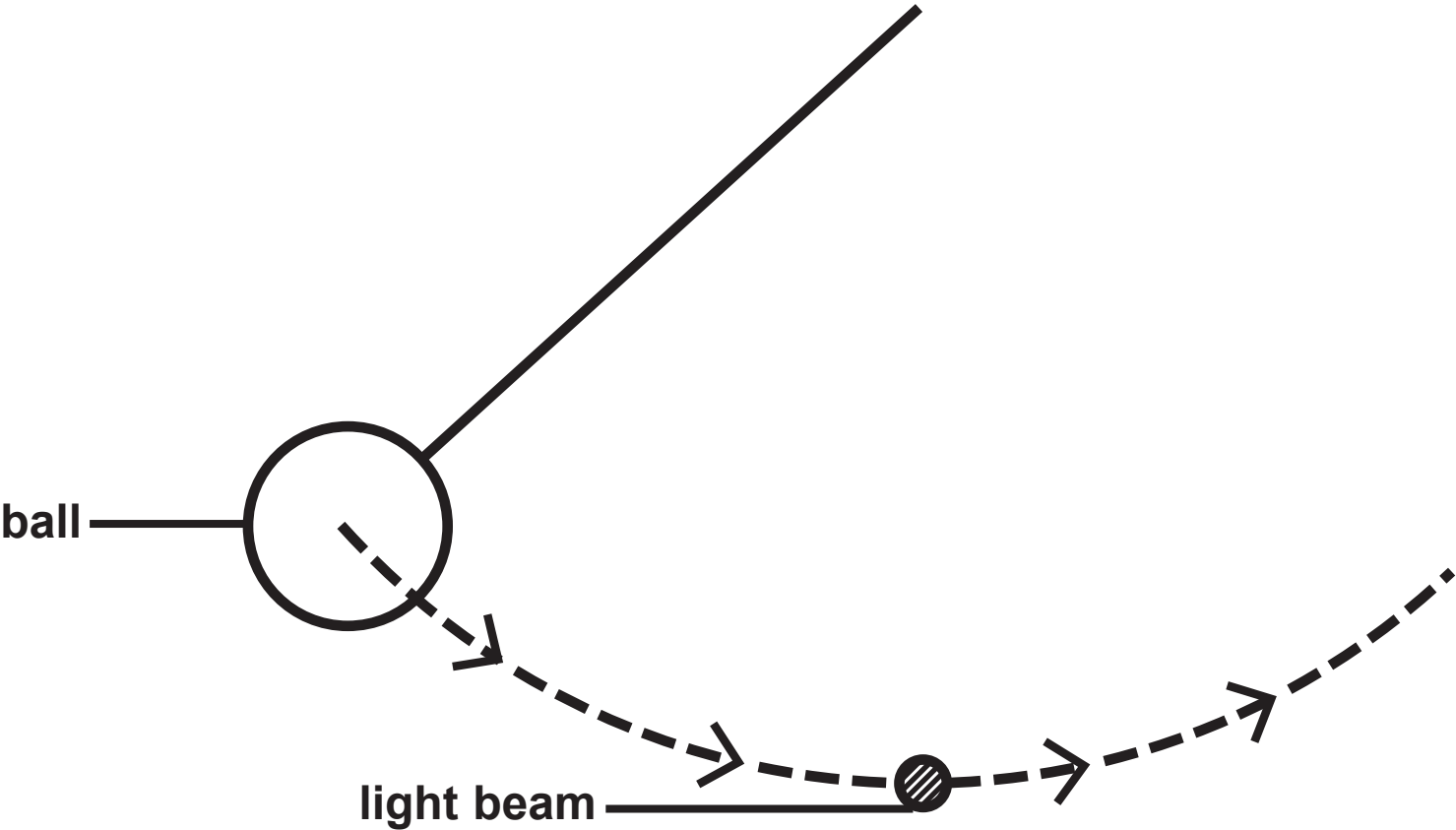
## Question 2(a)

FIGURE 3



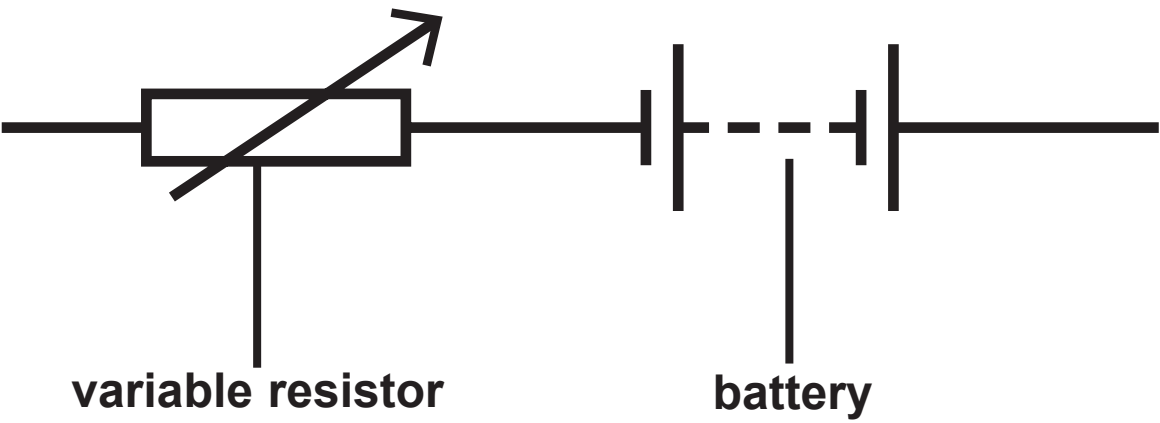
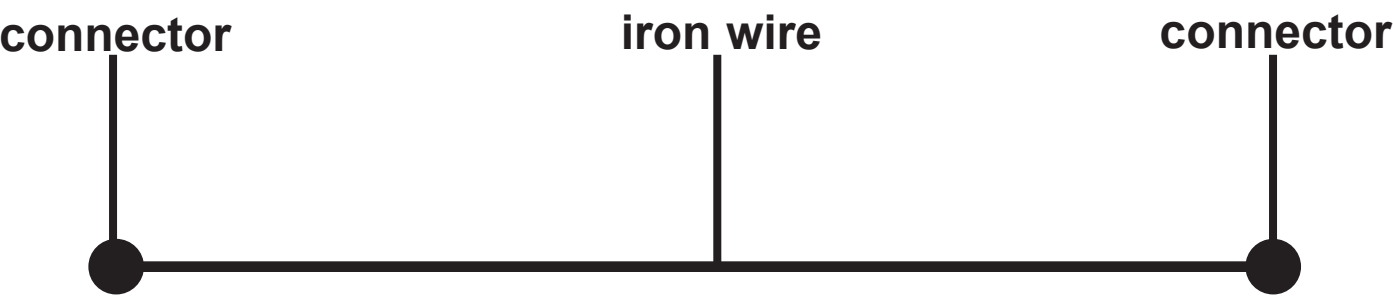
Question 4(d)

FIGURE 10



Question 5(b)

FIGURE 12



## Question 5(c)(ii)

FIGURE 13

